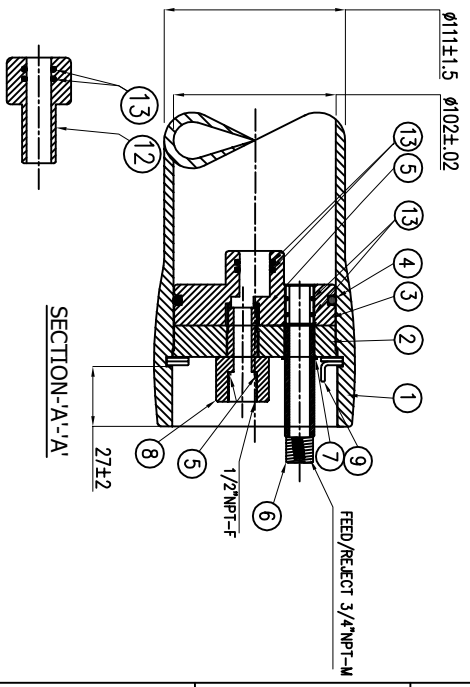
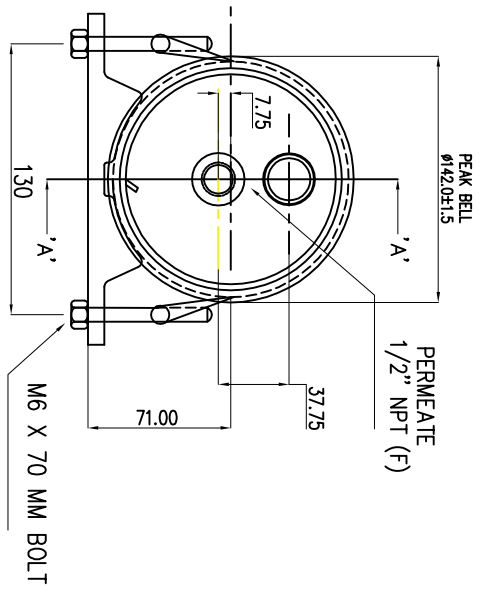
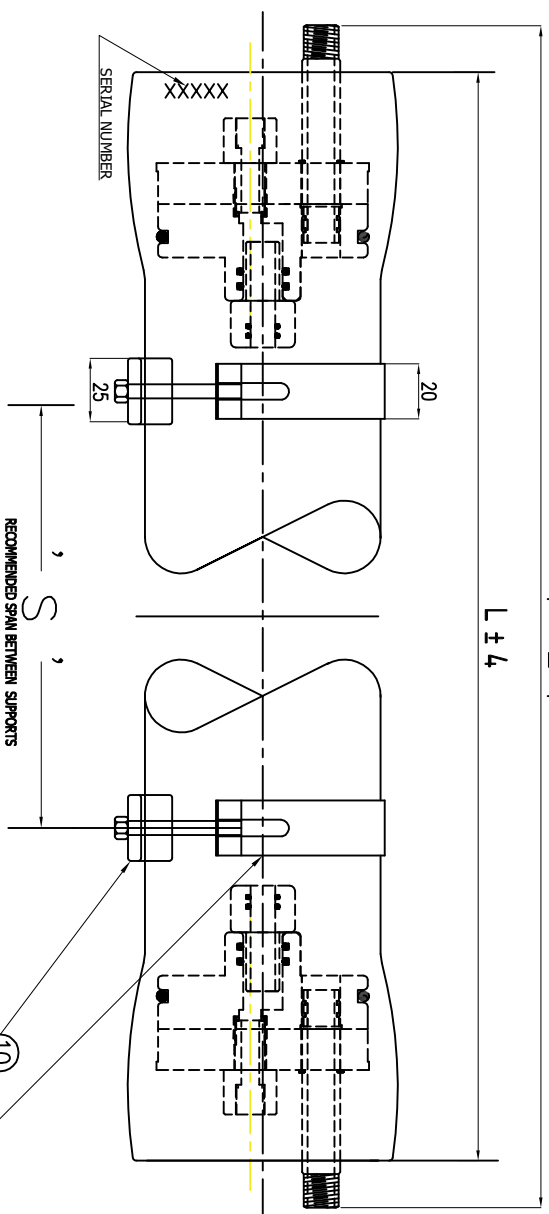


1000 PSI



DWG.REF	QTY.	PART NO.	DESCRIPTION	MATERIALS
			HOUSING SHELL	
1	1	-----	PRESSURE VESSEL	FIBERGLASS WOUND EPOXY/RESIN COMPOSITES (SS HEAD LOCKING GROOVES INTERNALLY WOUND)
			END CAP ASSEMBLY	
2	2		BEARING PLATE	6061-T6 ALUMINIUM WITH HARD ANODIZE
3	2		SEAL PLATE	ENGINEERING THERMOPLASTIC
4	4		HEAD SEAL	EPDM
5	4		FLAT WASHER	EPDM
6	2		FEED / REFLECT PORT	SS 316
7	2		PG PORT CIRCLIP	SS 316
8	2		PLUG NUT	ENGINEERING THERMOPLASTIC
			END CAP LOCKING	
9	2		RETAINING RING	SS 316
			PRESSURE VESSEL SUPPORT	
10	2		SADDLE	PE MATERIAL
11	2		STRAP ASSEMBLY	SS 316 WITH CUSHION
			INTERNAL SPARBS	
12	2		MEMBRANE CONNECTOR	ENGINEERING THERMOPLASTIC
13	8		O RING	EPDM

SHELL LENGTH CODE	MODEL	L ALL LENGTH MM	P PORT - PORT MM	S SPAN MM	APPROX. ASSEMBLY WEIGHT KG
1	40E1000-1	1268	1320	730	12
2	40E1000-2	2284	2336	1275	15
3	40E1000-3	3301	3352	1796	18
4	40E1000-4	4320	4368	1655X2	21
5	40E1000-5	5336	5384	1863X2	24
6	40E1000-6	6353	6400	2321X2	30

TECHNICAL SPECIFICATION

Design Pressure 1000 PSI (68.96 Bar)
 Max Operating Temperature 49°C (120.2° F)
 Min Operating Temperature -07°C (19.40° F)
 Hydro- Test Pressure 1100 PSI (75.86 Bar)
 (Hydro Test Pressure- 1.1 Times of Design Pressure as per the ASME section -X)

WARNING :-
 -INCORRECT MAN HOLDING WILL CAUSE SEVERE LOCAL STRESS AROUND PORT AND MAY RESULT IN LEAKS AND PREMATURE FAILURE.
 -TAKE EVERY PRECAUTION MENTIONED IN USER MANUAL.
 -SPECIFICATION SUBJECT TO CHANGE WITHOUT NOTICE.

TITLE :- DAX PRESSURE VESSEL

MODEL :- 40E1000

PROJECT :-

CLIENT :-

NOTES:

- DIMENSIONS ARE IN MM.
- FOR REFERENCE ONLY NOT TO BE USED FOR CONSTRUCTION UNLESS CERTIFIED.
- CENTER VESSEL ON 2 / 3 SUPPORTS AT SPAN "S".
- ** 3 SUPPORTS REQUIRED FOR LENGTH -4 ABOVE.
- INTERNAL PERMEATE PRESSURE NOT EXCEED 125 PSI.
- EXTERIOR OF MEMBRANE HOUSING COATED WITH HIGH GLOSS POLYURETHANE PAINT.

1	2	3	4	5	6	7	8	9
DRAWN : RSP					DATE : 02-05-22		PART NO : -	
CHECKED : RSP					SCALE : NS		Dwg NO :-	
APPROVED : RSP					SHEET NO : 1 OF 1		REV	
					Works:- No-1, Jodhpur Industrial Estate, N-Viholi Village, Mumbai-Nashik- Highway, Nashik-422010 #96577818156 Web : www.daxindustries.com Email : daxindustries.india@gmail.com			
					FILE			