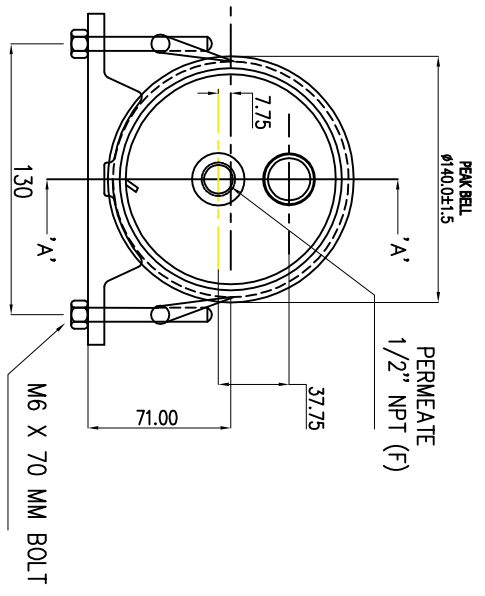
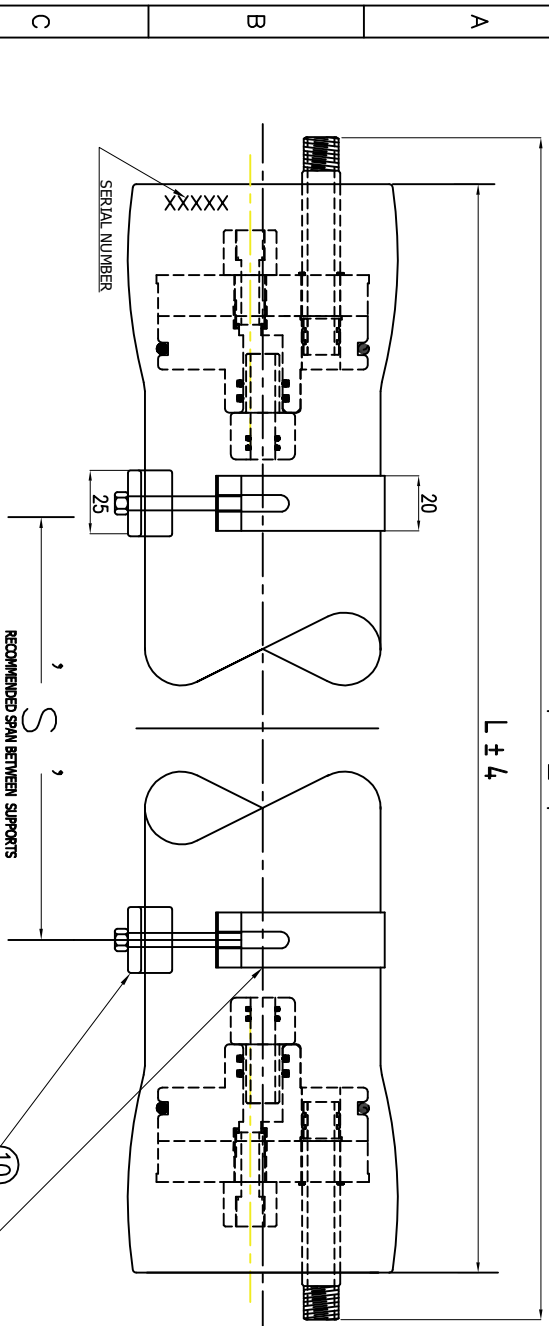
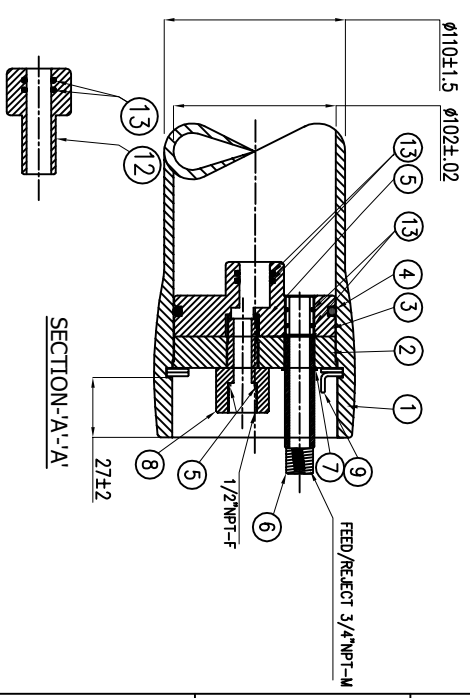


600 PSI



DWG. REF.	QTY.	PART NO.	DESCRIPTION	MATERIALS
HOUSING SHELL				
1	1	-----	PRESSURE VESSEL	FIBERGLASS WOUND EPOXY/GRASS COMPOSITES (SS HEAD LOCKING GROOVES INTERNALLY WOUND)
END CAP ASSEMBLY				
2	2		BEARING PLATE	6061-T6 ALUMINIUM WITH HARD ANODIZE
3	2		SEAL PLATE	ENGINEERING THERMOPLASTIC
4	4		HEAD SEAL	EPDM
5	4		FLAT WASHER	EPDM
6	2		FEED / REJECT PORT	SS 316
7	2		FG PORT CIRCLIP	SS 316
8	2		PLUG NUT	ENGINEERING THERMOPLASTIC
END CAP LOCKING				
9	2		RETAINING RING	SS 316
PRESSURE VESSEL SUPPORT				
10	2		SAADDLE	PE MATERIAL
11	2		STRAP ASSEMBLY	SS 316 WITH CUSHION
INTERNAL SPARERS				
12	2		MEMBRANE CONNECTOR	ENGINEERING THERMOPLASTIC
13	8		O RING	EPDM

SHELL LENGTH CODE	MODEL	L ALL LENGTH MM	P PORT - PORT MM	S SPAN MM	APPROX. ASSEMBLY WEIGHT KG
1	40E600-1	1268	1320	730	9
2	40E600-2	2284	2336	1275	12
3	40E600-3	3301	3352	1796	15
4	40E600-4	4320	4368	1655X2	18
5	40E600-5	5336	5384	1863X2	22
6	40E600-6	6353	6400	2321X2	25



TECHNICAL SPECIFICATION

Design Pressure 600 PSI (41.37 Bar)
 Max Operating Temperature 49°C (120.2° F)
 Min Operating Temperature -07°C (19.40° F)
 Hydro- Test Pressure 660 PSI (45.51 Bar)
 (Hydro Test Pressure- 1.1 Times of Design Pressure as per the ASME section -X)

WARNING :-
 -INCORRECT MAN HOLDING WILL CAUSE SEVERE LOCAL STRESS AROUND PORT AND MAY RESULT IN LEAKS AND PERMEATE FAILURE.
 -TAKE EVERY PRECAUTION MENTIONED IN USER MANUAL.
 -SPECIFICATION SUBJECT TO CHANGE WITHOUT NOTICE.

TITLE :- DAX PRESSURE VESSEL

MODEL :- 40E600

PROJECT :-

CLIENT :-

- NOTES:**
- DIMENSIONS ARE IN MM.
 - FOR REFERENCE ONLY NOT TO BE USED FOR CONSTRUCTION UNLESS CERTIFIED.
 - CENTER VESSEL ON 2 / 3 SUPPORTS AT SPAN "S".
 - ** 3 SUPPORTS REQUIRED FOR LENGTH -4 ABOVE.
 - INTERNAL PERMEATE PRESSURE NOT EXCEED 125 PSI.
 - EXTERIOR OF MEMBRANE HOUSING COATED WITH HIGH GLOSS POLYURETHANE PAINT.

1	2	3	4	5	6	7	8	9
DRAWN : RSP					DATE : 02-05-22		PART NO : -	
CHECKED : RSP					SCALE : NS		Dwg NO :-	
APPROVED : RSP					DATE : -		SHEET NO : 1 OF 1	
					Works:- No-1, Jodhpur Industrial Estate, N-Viholi Village, Mumbai-Nashik- Highway, 778156 #965778156 Web : www.daxindustrial.com Email : daxindustrial@gmail.com		REV	
							0	