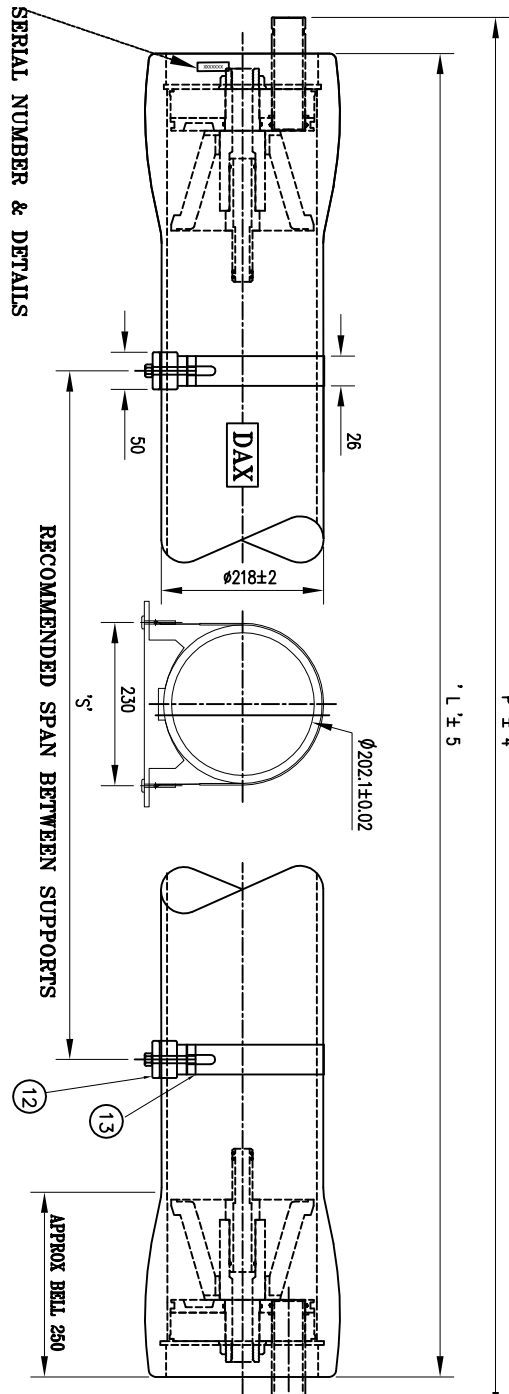


1' ± .4

1' ± .5



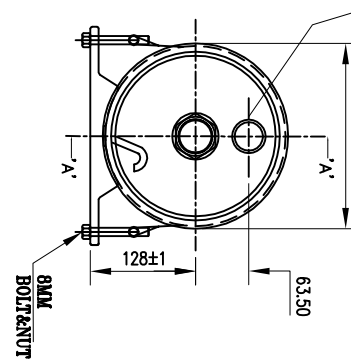
SERIAL NUMBER & DETAILS

RECOMMENDED SPAN BETWEEN SUPPORTS

1000 PSI

FEED/CONCENTRATE GROOVED END IRS-P1PR 1.5" (VICTAULIC CONNECTION)

PEAK BELT DIA. $\phi 256 \pm 0.2$



DWG REF	QTY	PART NO	DESCRIPTION	MATERIALS
HOUSING SHELL				
1	1	-----	PRESSURE VESSEL	PLASTIC WOUND EPXY/GLASS COMPOSITES (HEAD LOCKING GROOVES INTEGRALLY WOUND)
END CAP ASSEMBLY				
2	2		BEARING PLATE	ALUMINUM 6061-T6 WITH ANODIZE
3	2		SEALING PLATE	ENGINEERING THERMOPLASTIC
4	2		PERMEATE PORT	ENGINEERING THERMOPLASTIC
5	2		HEAD SEAL	EPDM
6	2		F/C PORT	SS 316L
7	2		F/C PORT RETAINER	SS 316L
8	2		F/C PORT SEAL	EPDM
9	2		SEAL PLATE SEAL	EPDM
10	2		PORT NUT	ENGINEERING THERMOPLASTIC
END CAP LOCKING				
11	2		REMAINING RING	SS 304 FINGER PULL
PRESSURE VESSEL SUPPORT				
12	2		SADDLE	PE MATERIAL
13	2		STRAP ASSEMBLY	SS 304 WITH CUSHION
INTERNAL ASSEMBLY				
14	1		THRUST CONE	ENGINEERING THERMOPLASTIC
15	2		MEMBRANE ADAPTER	ENGINEERING THERMOPLASTIC
16	2		ADAPTER SEAL - P	EPDM
17	4		ADAPTER SEAL - M	EPDM

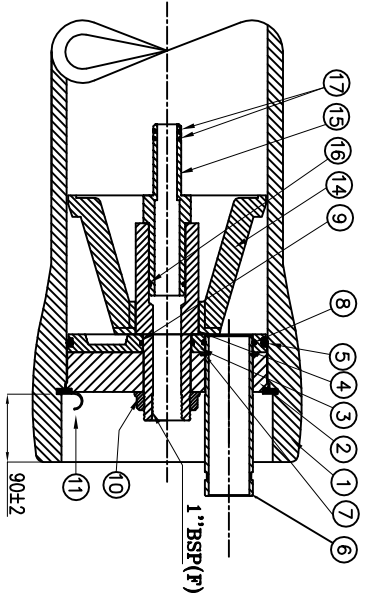
SHELL LENGTH CODE	MODEL	'L' MM	'S' MM	APPROX. ASSEMBLY WEIGHT KG	PORT-PORT MM
-1	80E1000-1	1604	676	15	1684
-2	80E1000-2	2620	1656	23	2700
-3	80E1000-3	3636	2674	31	3716
-4	80E1000-4	4652	1845X2	38	4732
-5	80E1000-5	5668	2355X2	45	5748
-6	80E1000-6	6684	2865X2	52	6764
-7	80E1000-7	7700	3300X2	61	7780

TECHNICAL SPECIFICATION

Design Pressure 1000 PSI (68.96 Bar)
 Max Operating Temperature 49°C (120.2° F)
 Min Operating Temperature -07°C (19.40° F)
 Hydro- Test Pressure 1100 PSI (75.86 Bar)
 (Hydro Test Pressure- 1.1 Times of Design Pressure as per the ASME section -X)

CAUTION :-
 1. NUMBER '15' TO BE USED ONLY AT DOWN STREAM.
 2. ADAPTER SPACERS TO BE USED ONLY AT UP STREAM. THREE SPACERS WITH EACH VESSEL(S). (3x2x2MM).

WARNING :-
 INCORRECT MAN HOLDING WILL CAUSE SEVERE LOCAL STRESS AROUND PORT AND MAY RESULT IN LEAKS AND PREMATURE FAILURE.
 TAKE EVERY PRECAUTION MENTIONED IN USER MANUAL.
 SPECIFICATION SUBJECT TO CHANGE WITHOUT NOTICE.



SECTION-A-A

TITLE :- DAX PRESSURE VESSEL
 MODEL :- 80E1000
 PROJECT :-
 CLIENT :-

DRAWN : RSP
 CHECKED : RSP
 APPROVED : RSP
 SCALE : NS
 DATE : 02-05-22

PART NO : -
 DRG NO :-
 SHEET NO : 1 OF 1
 REV

DAX

Works:-
 Shed No-1, Jodhpur Industrial Estate,
 N.Viholi Village, Mumbai-Kaashik-
 Highway/Venak-422010
 Web : www.daxindia.com
 #963778156
 Email : dandan@rtds.com@gmail.com

- NOTES:
 1. DIMENSIONS ARE IN MM.
 2. FOR REFERENCE ONLY NOT TO BE USED FOR CONSTRUCTION UNLESS CERTIFIED.
 3. CENTER VESSEL ON 2 / 3 SUPPORTS AT SPAN 'S'.
 4. ** 3 SUPPORTS REQUIRED FOR LENGTH - 4 ABOVE.
 5. INTERNAL PERMEATE HOUSING NOT EXCEED 125 PSI.
 6. EXTERIOR OF MEMBRANE HOUSING COATED WITH HIGH GLOSS POLYURETHANE PAINT.

1 2 3 4 5 6 7 8 9