

DWG REF	QTY	PART NO	DESCRIPTION	MATERIALS
HOUSING SHELL				
1	1	-----	PRESSURE VESSEL	PLASTIC WOUND EPOXY/GLASS COMPOSITES (HEAD LOCKING GROOVES INTEGRALLY WOUND)
END CAP ASSEMBLY				
2	2	52003	BEARING PLATE	ALUMINIUM 6061-T6 WITH ANODIZE
3	2	52007	SEALING PLATE	ENGINEERING THERMOPLASTIC
4	2	52181	PERMEATE PORT	ENGINEERING THERMOPLASTIC
5	2	52200	HEAD SEAL	EPDM-PC
6	2	52027	F/C PORT	SUPER DUPLEX/CD3MWCuN
7	2	52016	F/C PORT LOCK NUT	SUPER DUPLEX/CD3MWCuN
8	2	52020	F/C PORT SEAL	EPDM-PC
9	2	52162	F/C PORT WASHER	SUPER DUPLEX/CD3MWCuN
10	2	52035	SEAL PLATE SEAL	EPDM-PC
11	2	52055	PORT NUT	ENGINEERING THERMOPLASTIC
END CAP LOCKING				
12	2	52055	REMAINING RING	SS 316 FINGER PULL
PRESSURE VESSEL SUPPORT				
13	2	52066	SADDLE	PV/PE MATERIAL
14	2	52137	STRAP ASSEMBLY	SS 316 WITH PU CUSHION-MAX100
INTERNAL ASSEMBLY				
15	1	52078	THRUST CONE	ENGINEERING THERMOPLASTIC
16	2	52032	MEMBRANE ADAPTER	ENGINEERING THERMOPLASTIC
17	2	52042	ADAPTER SEAL - P	EPDM-PC
18	4	52041	ADAPTER SEAL - M	EPDM-PC

SHELL LENGTH CODE	MODEL	L MM	S' MM	APPROX. ASSEMBLY WEIGHT KG	PORT-PORT MM
-1	80S1000-1	1608	676	45	1194
-2	80S1000-2	2624	1656	65	2210
-3	80S1000-3	3640	2674	80	3226
-4	80S1000-4	4656	1845X2	90	4242
-5	80S1000-5	5672	2355X2	105	5258
-6	80S1000-6	6688	2865X2	120	6274
-7	80S1000-7	7704	3300X2	135	7290

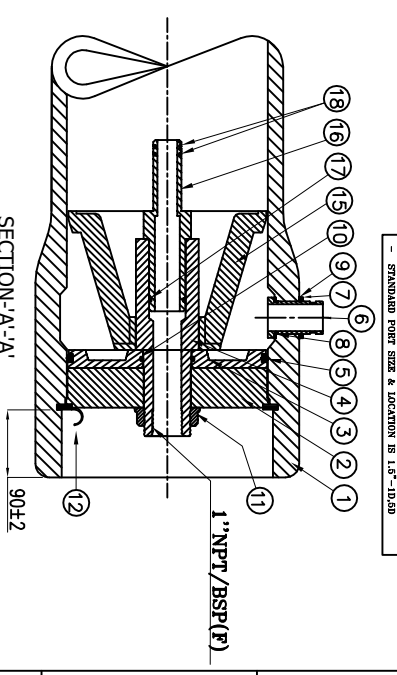
TECHNICAL SPECIFICATION	
Design Pressure	1000 PSI (68.96 Bar)
Max Operating Temperature	49°C (120.2° F)
Min Operating Temperature	-07°C (19.40° F)
Hydro- Test Pressure	1100 PSI (75.86 Bar)
(Hydro Test Pressure- 1.1 Times of Design Pressure as per the ASME section -X)	

CAUTION :-

1. NUMBER '15' TO BE USED ONLY AT DOWN STREAM.
2. ADAPTER SPACERS TO BE USED ONLY AT UP STREAM. THREE SPACERS WITH EACH VESSEL(S). (3x2x2MM).

WARNING :-

- INCORRECT MAN HOLDING WILL CAUSE SEVERE LOCAL STRESS AROUND PORT AND MAY RESULT IN LEAKS AND PREMATURE FAILURE.
- TAKE EVERY PRECAUTION MENTIONED IN USER MANUAL.
- SPECIFICATION SUBJECT TO CHANGE WITHOUT NOTICE.



- PORT LOCATION DETAILS			
SERIAL NO. LOCATION	PORT SIZE	BELL DIA.	PORT HEIGHT
1	1.5" GROOVER IRS PIPE	276	206±1
2	2.0" GROOVER IRS PIPE	282	272±1
3	2.5" GROOVER IRS PIPE	288	274±1

- STANDARD PORT SIZE & LOCATION IS 1.5"-10.50

TITLE :- DAX PRESSURE VESSEL

MODEL :- 80S1000(8" 1000PSI SIDE PORT)

PROJECT :-

CLIENT :-

NOTES:

1. DIMENSIONS ARE IN MM.
2. FOR REFERENCE ONLY NOT TO BE USED FOR CONSTRUCTION UNLESS CERTIFIED.
3. CENTER VESSEL ON 2 / 3 SUPPORTS AT SPAN "S".
4. ** 3 SUPPORTS REQUIRED FOR LENGTH - 4 ABOVE.
5. INTERNAL PERMEATE PRESSURE NOT EXCEED 125 PSI.
6. EXTERIOR OF MEMBRANE HOUSING COATED WITH HIGH GLOSS POLYURETHANE PAINT.

DRAWN : RSP **CHECKED : RSP**

APPROVED : RSP

SCALE : NS

DATE : 02-05-22

PART NO : 80S1000 **DWG NO :-80S1000**

SHEET NO : 1 OF 1

REV

Works: No-1, Jodhpur Industrial Estate, N-Village, Village, Mumbai-Nashik- Highway, Nashik-422010
 Web : www.daxindustries.com
 #9657778156
 Email : dandandax@rediffmail.com