

DWG REF	QTY	PART NO	DESCRIPTION	MATERIALS
---------	-----	---------	-------------	-----------

HOUSING SHELL				
1	1	-----	PRESSURE VESSEL	PLASTIC WOUND FIBRE/GLASS COMPOSITES (HEAD LOCKING GROOVES INTEGRALLY WOUND)
END CAP ASSEMBLY				
2	2	52003	BEARING PLATE	ALUMINIUM 6061-T6 WITH ANODIZE
3	2	52067	SEALING PLATE	ENGINEERING THERMOPLASTIC
4	2	52181	PERMEATE PORT	ENGINEERING THERMOPLASTIC
5	2	52200	HEAD SEAL	EPDM-PC
6	2	52027	F/C PORT	SUPER DUPLEX/CD3MWCuN
7	2	52016	F/C PORT LOCK NUT	SUPER DUPLEX/CD3MWCuN
8	2	52020	F/C PORT SEAL	EPDM-PC
9	2	52162	F/C PORT WASHER	SUPER DUPLEX/CD3MWCuN
10	2	52035	SEAL PLATE SEAL	EPDM-PC
11	2	52055	PORT NUT	ENGINEERING THERMOPLASTIC

END CAP LOCKING				
12	2	52055	REMAINING RING	SS 316 FINGER PULL
PRESSURE VESSEL SUPPORT				
13	2	52068	SADDLE	PV/PE MATERIAL
14	2	52137	STRAP ASSEMBLY	SS 316 WITH PV CUSHION-MAX100
INTERNAL ASSEMBLY				
15	1	52078	THRUST CONE	ENGINEERING THERMOPLASTIC
16	2	52032	MEMBRANE ADAPTER	ENGINEERING THERMOPLASTIC
17	2	52042	ADAPTER SEAL - P	EPDM-PC
18	4	52041	ADAPTER SEAL - M	EPDM-PC

- NOTES:**
- DIMENSIONS ARE IN MM.
  - FOR REFERENCE ONLY NOT TO BE USED FOR CONSTRUCTION UNLESS CERTIFIED.
  - CENTER VESSEL ON 2/3 SUPPORTS AT SPAN "S".
  - \*\* 3 SUPPORTS REQUIRED FOR LENGTH - 4 ABOVE.
  - INTERNAL PERMEATE PRESSURE NOT EXCEED 125 PSI.
  - EXTERIOR OF MEMBRANE HOUSING COATED WITH HIGH GLOSS POLYURETHANE PAINT.

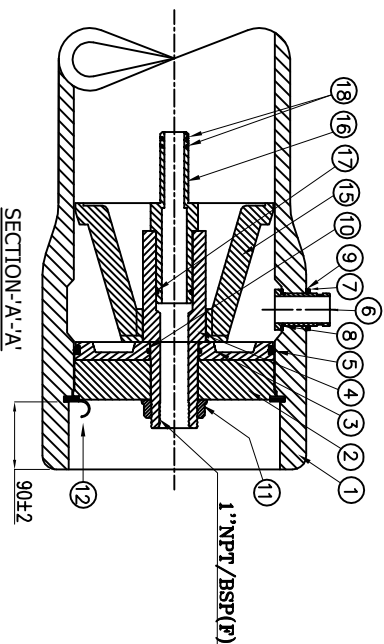
SHELL LENGTH CODE	MODEL	L MM	S' MM	APPROX. ASSEMBLY WEIGHT KG	PORT-PORT MM
-1	80S1200-1	1608	676	50	1194
-2	80S1200-2	2624	1656	70	2210
-3	80S1200-3	3640	2674	85	3226
-4	80S1200-4	4656	1845X2	95	4242
-5	80S1200-5	5672	2355X2	110	5258
-6	80S1200-6	6688	2865X2	125	6274
-7	80S1200-7	7704	3300X2	140	7290

**TECHNICAL SPECIFICATION**

Design Pressure 1200 PSI (82.75 Bar)  
 Max Operating Temperature 49°C (120.2° F)  
 Min Operating Temperature -07°C (19.40° F)  
 Hydro-Test Pressure 1330 PSI (91.72 Bar)  
 (Hydro Test Pressure- 1.1 Times of Design Pressure as per the ASME section -X)

**CAUTION :-**  
 1. NUMBER '15' TO BE USED ONLY AT DOWN STREAM.  
 2. ADAPTER SPACERS TO BE USED ONLY AT UP STREAM THREE SPACERS WITH EACH VESSEL(5,3&2MM).

**WARNING :-**  
 INCORRECT MAN HOLDING WILL CAUSE SEVERE LOCAL STRESS AROUND PORT AND MAY RESULT IN LEAKS AND TAKE EVERY PRECAUTION MENTIONED IN USER MANUAL.  
 -SPEICIFICATION SUBJECT TO CHANGE WITHOUT NOTICE.



**PORT LOCATION DETAILS**

PORT NO.	PORT LOCATION	PORT SIZE	BELT DIA.	PORT HEIGHT
1	D	1.5" GROOVED IRS PIPE	278	278
2	E	2.0" GROOVED IRS PIPE	284	284
3	F	2.5" GROOVED IRS PIPE	290	274
4	G	3.0" GROOVED IRS PIPE	296	274

STANDARD PORT SIZE & LOCATION IS 1.5" - 10.50

**TITLE :- DAX PRESSURE VESSEL**

**MODEL :- 80S1200(8" 1200PSI SIDE PORT)**

**PROJECT :-**

**CLIENT :-**

DRAWN : RSP  
 CHECKED : RSP  
 APPROVED : RSP  
 SCALE : NS  
 DATE : 02-05-22

Part NO : 80S1200  
 Dwg NO :-80S1200

SHEET NO : 1 OF 1

Works:  
 Shed No-1,Jodhpur Industrial Estate,  
 Nr-Viholi Village, Mumbai-Nashik-  
 Highway,Nashik-422010  
 #9657778156  
 Web : www.daxindustries.com  
 Email : daxindustries@rediffmail.com