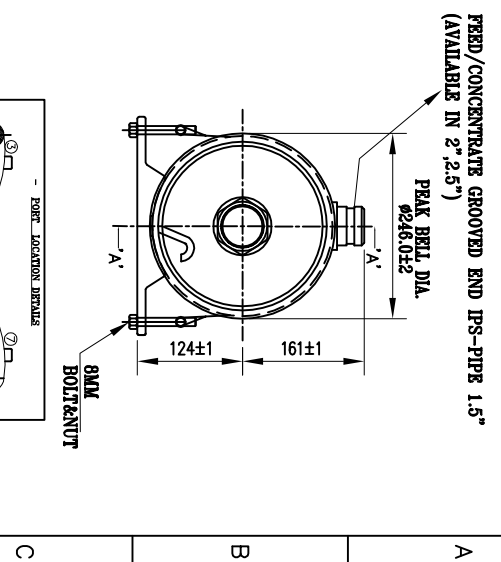
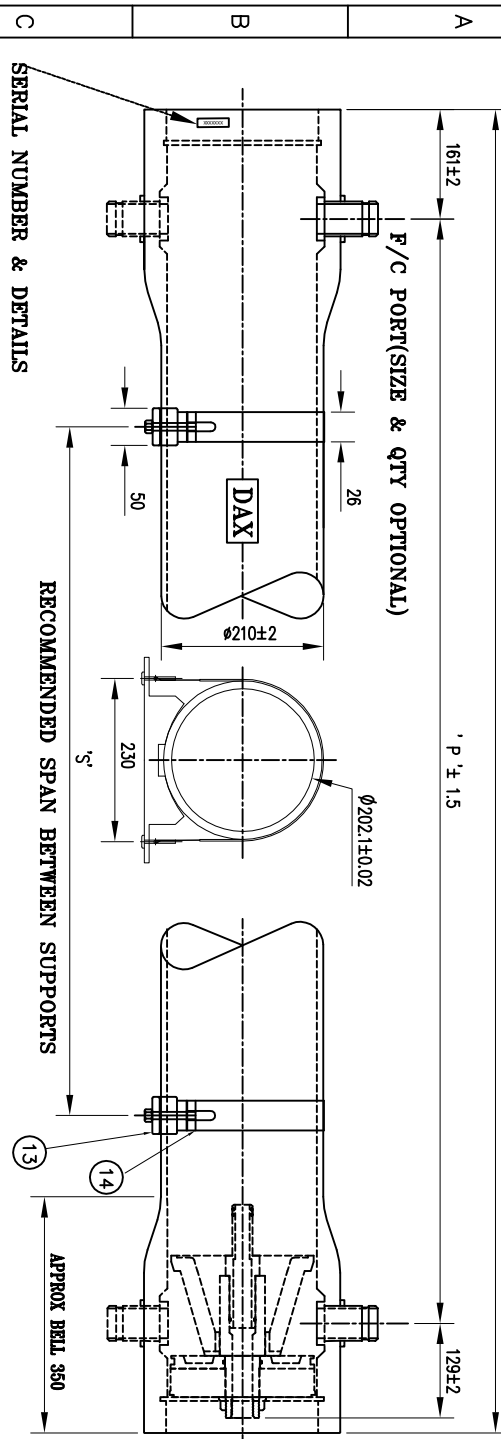


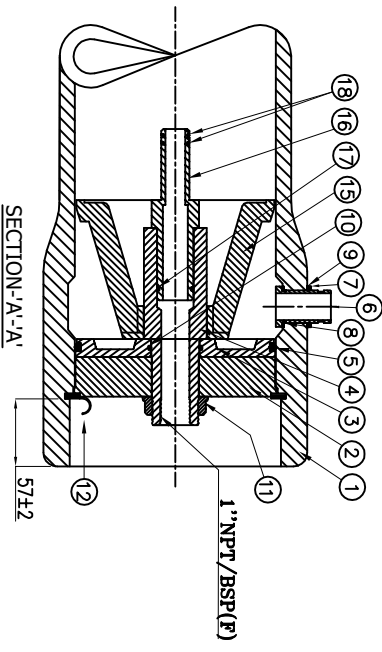
300 PSI



PORT LOCATION DETAILS

SERIAL NO. LOCATION	PORT SIZE	BELL DIA.
D 1.5" GROOVED IFS PIPE	246	246
E 2.0" GROOVED IFS PIPE	252	252
F 2.5" GROOVED IFS PIPE	258	258

STANDARD PORT SIZE & LOCATION IS 1.5" & 1/8" OD



DWG REF	QTY	PART NO	DESCRIPTION	MATERIALS
HOUSING SHELL				
1	1	-----	PRESSURE VESSEL	PLASTIC WOUND EPOXY/GLASS COMPOSITES (HEAD LOCKING GROOVES INTEGRALLY WOUND)
END CAP ASSEMBLY				
2	2	52006	BEARING PLATE	ALUMINIUM 6061-T6 WITH ANODIZE
3	2	52067	SEALING PLATE	ENGINEERING THERMOPLASTIC
4	2	52181	PERMEATE PORT	ENGINEERING THERMOPLASTIC
5	2	52200	HEAD SEAL	EPDM-PC
6	2	52027	F/C PORT	SS 316L/CF3M
7	2	52016	F/C PORT LOCK NUT	SS 316L/CF3M
8	2	52020	F/C PORT SEAL	EPDM-PC
9	2	52162	F/C PORT WASHER	SS 316L/CF3M
10	2	52035	SEAL PLATE SEAL	EPDM-PC
11	2	52055	PORT NUT	ENGINEERING THERMOPLASTIC
END CAP LOCKING				
12	2	52055	REMAINING RING	SS 316 FINGER PULL
PRESSURE VESSEL SUPPORT				
13	2	52066	SADDLE **	PV/PE MATERIAL
14	2	52137	STRAP ASSEMBLY **	SS 316 WITH PV CUSHION-MAX100
INTERNAL ASSEMBLY				
15	1	52078	THRUST CONE	ENGINEERING THERMOPLASTIC
16	2	52032	MEMBRANE ADAPTER	ENGINEERING THERMOPLASTIC
17	2	52042	ADAPTER SEAL - P	EPDM-PC
18	4	52041	ADAPTER SEAL - M	EPDM-PC

SHELL LENGTH CODE	MODEL	'L' MM	'S' MM	APPROX. ASSEMBLY WEIGHT KG	PORT-PORT MM
-1	80S300-1	1516	676	15	1194
-2	80S300-2	2632	1656	25	2210
-3	80S300-3	3548	2674	32	3226
-4	80S300-4	4564	1845X2	38	4242
-5	80S300-5	5580	2355X2	44	5258
-6	80S300-6	6596	2865X2	52	6274
-7	80S300-7	7612	3300X2	62	7290

TECHNICAL SPECIFICATION

Design Pressure 300 PSI (20.68 Bar)
 Max Operating Temperature 49°C (120.2° F)
 Min Operating Temperature -07°C (19.40° F)
 Hydro- Test Pressure 330 PSI (22.75 Bar)
 (Hydro Test Pressure- 1.1 Times of Design Pressure as per the ASME section -X)

CAUTION :-
 1. NUMBER '15' TO BE USED ONLY AT DOWN STREAM.
 2. ADAPTER SPACERS TO BE USED ONLY AT UP STREAM. THREE SPACERS WITH EACH VESSEL(S). 3x2x2MM.

WARNING :-
 INCORRECT MAN HOLDING WILL CAUSE SEVERE LOCAL STRESS AROUND PORT AND MAY RESULT IN LEAKS AND PREMATURE FAILURE.
 TAKE EVERY PRECAUTION MENTIONED IN USER MANUAL.
 REPLICATION SUBJECT TO CHANGE WITHOUT NOTICE.

CLIENT :-

TITLE :- DAX PRESSURE VESSEL
MODEL :- 80S300(8" 300PSI SIDE PORT)

PROJECT :-

WORKS:-
 Shed No-1, Jodhpur Industrial Estate,
 Nr-Vijoli, Village, Mumbai-Nashik-
 Highway, Nashik-422010
 Web : www.daxindustries.com
 #9653778156
 Email : daxindustries.india@gmail.com



DRAWN :- RSP
CHECKED :- RSP
APPROVED :- RSP
SCALE :- NS
DATE :- 02-05-22

PART NO :- 80S300
DWG NO :- 80S300
SHEET NO :- 1 OF 1

NOTES:
 1. DIMENSIONS ARE IN MM.
 2. FOR REFERENCE ONLY NOT TO BE USED FOR CONSTRUCTION UNLESS CERTIFIED.
 3. CENTER VESSEL ON 2 / 3 SUPPORTS AT SPAN "S".
 4. ** 3 SUPPORTS REQUIRED FOR LENGTH - 4 ABOVE.
 5. INTERNAL PERMEATE PRESSURE NOT EXCEED 125 PSI.
 6. EXTERIOR OF MEMBRANE HOUSING COATED WITH HIGH GLOSS POLYURETHANE PAINT.

1	2	3	4	5	6	7	8	9
---	---	---	---	---	---	---	---	---