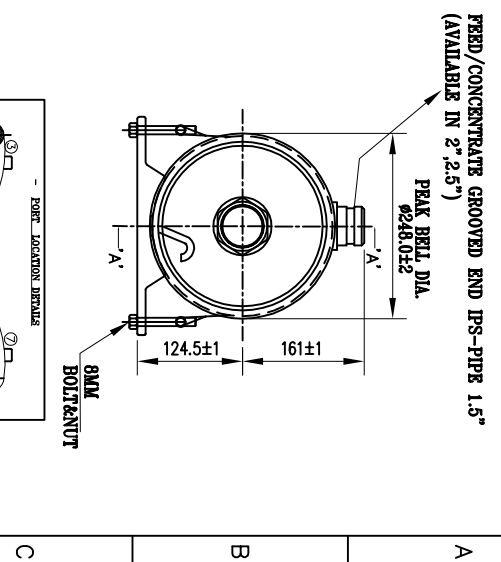
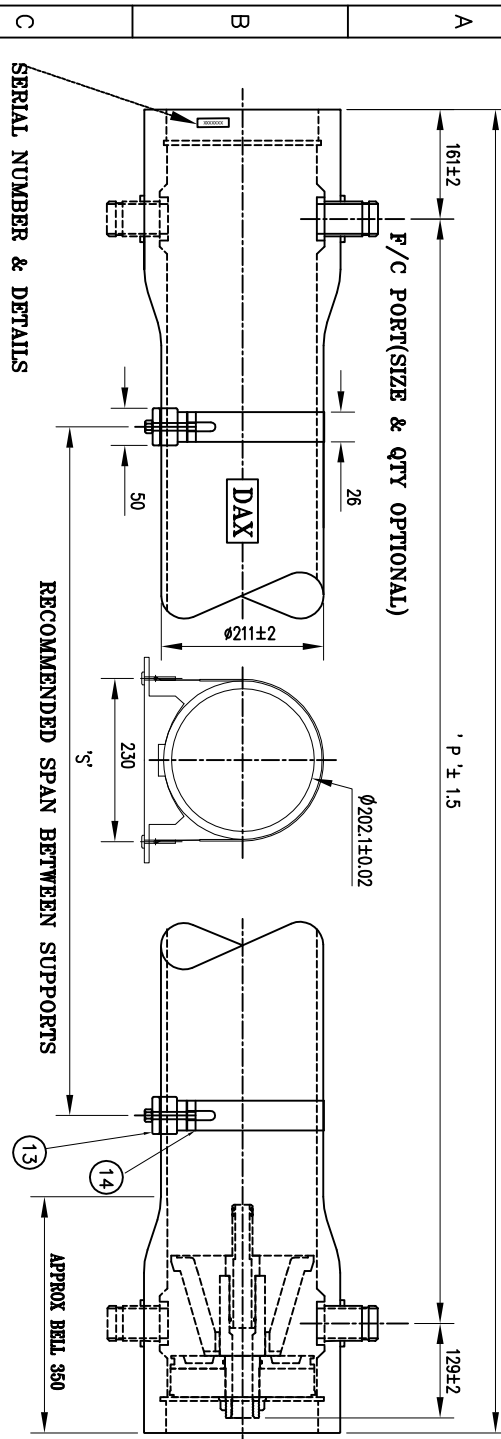


450 PSI



PORT LOCATION DETAILS

SERIAL NO. LOCATION	PORT SIZE	BELL DIA.
1	1.5" GROOVED IFS PIPE	248
2	2.0" GROOVED IFS PIPE	254
3	2.5" GROOVED IFS PIPE	260

STANDARD PORT SIZE & LOCATION IS 1.5" & 1.50D

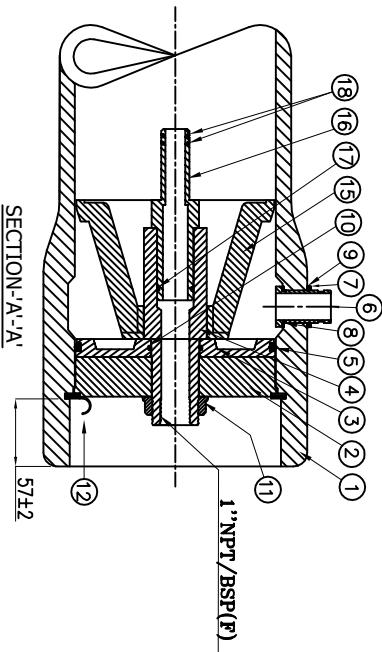
DWG REF	QTY	PART NO	DESCRIPTION	MATERIALS
<b>HOUSING SHELL</b>				
1	1	-----	PRESSURE VESSEL	PLASTIC WOUND EPOXY/GLASS COMPOSITES (HEAD LOCKING GROOVES INTEGRALLY WOUND)
<b>END CAP ASSEMBLY</b>				
2	2	52006	BEARING PLATE	ALUMINIUM 6061-T6 WITH ANODIZE
3	2	52067	SEALING PLATE	ENGINEERING THERMOPLASTIC
4	2	52181	PERMEATE PORT	ENGINEERING THERMOPLASTIC
5	2	52200	HEAD SEAL	EPDM-PC
6	2	52027	F/C PORT	SS 316L/CP3M
7	2	52016	F/C PORT LOCK NUT	SS 316L/CP3M
8	2	52020	F/C PORT SEAL	EPDM-PC
9	2	52162	F/C PORT WASHER	SS 316L/CP3M
10	2	52035	SEAL PLATE SEAL	EPDM-PC
11	2	52055	PORT NUT	ENGINEERING THERMOPLASTIC
<b>END CAP LOCKING</b>				
12	2	52055	REMAINING RING	SS 316 FINGER PULL
<b>PRESSURE VESSEL SUPPORT</b>				
13	2	52068	SADDLE **	PU/PE MATERIAL
14	2	52137	STRAP ASSEMBLY **	SS 316 WITH PU CUSHION
<b>INTERNAL ASSEMBLY</b>				
15	1	52078	THRUST CONE	ENGINEERING THERMOPLASTIC
16	2	52032	MEMBRANE ADAPTER	ENGINEERING THERMOPLASTIC
17	2	52042	ADAPTER SEAL - P	EPDM-PC
18	4	52041	ADAPTER SEAL - M	EPDM-PC

SHELL LENGTH CODE	MODEL	'L' MM	'S' MM	APPROX. ASSEMBLY WEIGHT KG	PORT-PORT MM
-1	80S450-1	1516	676	18	1194
-2	80S450-2	2532	1656	28	2210
-3	80S450-3	3548	2674	35	3226
-4	80S450-4	4564	1845X2	41	4242
-5	80S450-5	5580	2355X2	47	5258
-6	80S450-6	6596	2865X2	55	6274
-7	80S450-7	7612	3300X2	65	7290

DWG REF	QTY	PART NO	DESCRIPTION	MATERIALS
<b>HOUSING SHELL</b>				
1	1	-----	PRESSURE VESSEL	PLASTIC WOUND EPOXY/GLASS COMPOSITES (HEAD LOCKING GROOVES INTEGRALLY WOUND)
<b>END CAP ASSEMBLY</b>				
2	2	52006	BEARING PLATE	ALUMINIUM 6061-T6 WITH ANODIZE
3	2	52067	SEALING PLATE	ENGINEERING THERMOPLASTIC
4	2	52181	PERMEATE PORT	ENGINEERING THERMOPLASTIC
5	2	52200	HEAD SEAL	EPDM-PC
6	2	52027	F/C PORT	SS 316L/CP3M
7	2	52016	F/C PORT LOCK NUT	SS 316L/CP3M
8	2	52020	F/C PORT SEAL	EPDM-PC
9	2	52162	F/C PORT WASHER	SS 316L/CP3M
10	2	52035	SEAL PLATE SEAL	EPDM-PC
11	2	52055	PORT NUT	ENGINEERING THERMOPLASTIC
<b>END CAP LOCKING</b>				
12	2	52055	REMAINING RING	SS 316 FINGER PULL
<b>PRESSURE VESSEL SUPPORT</b>				
13	2	52068	SADDLE **	PU/PE MATERIAL
14	2	52137	STRAP ASSEMBLY **	SS 316 WITH PU CUSHION
<b>INTERNAL ASSEMBLY</b>				
15	1	52078	THRUST CONE	ENGINEERING THERMOPLASTIC
16	2	52032	MEMBRANE ADAPTER	ENGINEERING THERMOPLASTIC
17	2	52042	ADAPTER SEAL - P	EPDM-PC
18	4	52041	ADAPTER SEAL - M	EPDM-PC

**TECHNICAL SPECIFICATION**

Design Pressure 450 PSI (31.03 Bar)  
 Max Operating Temperature 49°C (120.2° F)  
 Min Operating Temperature -07°C (19.40° F)  
 Hydro- Test Pressure 495 PSI (34.13 Bar)  
 (Hydro Test Pressure- 1.1 Times of Design Pressure as per the ASME section -X)



TITLE :- DAX PRESSURE VESSEL  
 MODEL :- 80S450(8) 450PSI SIDE PORT

**NOTES:**

- DIMENSIONS ARE IN MM.
- FOR REFERENCE ONLY NOT TO BE USED FOR CONSTRUCTION UNLESS CERTIFIED.
- CENTER VESSEL ON 2 / 3 SUPPORTS AT SPAN "S".
- \*\* 3 SUPPORTS REQUIRED FOR LENGTH - 4 ABOVE.
- INTERNAL PERMEATE PRESSURE NOT EXCEED 125 PSI.
- EXTERIOR OF MEMBRANE HOUSING COATED WITH HIGH GLOSS POLYURETHANE PAINT.

**CAUTION :-**

- NUMBER '15' TO BE USED ONLY AT DOWN STREAM.
- ADAPTER SPACERS TO BE USED ONLY AT UP STREAM THREE SPACERS WITH EACH VESSEL(5,3&2MM).

**WARNING :-**

- CORRECT MAN HOLDING WILL CAUSE SEVERE.
- LOCAL STRESS AROUND PORT AND MAY RESULT IN LEAKS AND PREMATURE FAILURE.
- TAKE EVERY PRECAUTION MENTIONED IN USER MANUAL.
- REPLICATION SUBJECT TO CHANGE WITHOUT NOTICE.

DRAWN : RSP  
 CHECKED : RSP  
 APPROVED : RSP  
 SCALE : NS  
 DATE : 02-05-22

CLIENT :-

Works:-  
 Shed No-1, Jodhpur Industrial Estate,  
 Nr-Vijoli Village, Mumbai-Nashik-  
 Highway, Nashik-422010  
 Web : www.daxindia.com  
 #9657778156  
 Email : daxindia@rediffmail.com

PART NO : 80S450  
 Dwg No :- 80S450  
 SHEET NO : 1 OF 1